

GOTA DE LECHE

SHARING THE MILK OF HUMAN KINDNESS
SINCE 1906



"RESPONSIVE NUTRITION SUPPORT AMIDST PANDEMIC"
ANNUAL REPORT
2020

ABOUT US ...

At the beginning of the 20th Century, Trinidad Rizal, sister of the country's National Hero joined the farsighted leader Concepcion Felix, and other educated women to form Asociacion Feminista Filipina in 1905, a trail-blazing organization dedicated to the welfare of women and minors. Coming out of the Philippine-American War, when hunger and disease spurred the rapid spread of beri-beri among mothers, the Asociacion turned its attention to infant mortality. 800 out of every 1,000 newborns died before reaching the age of 3 months. The Philippines had the highest rate of infant mortality in the world. By the time doctors had determined that tainted milk of infected mothers was causing these deaths. This led to the founding of Gota de Leche in 1906, which saw the establishment of a milk station and dairy, a socialized distribution system of pasteurized cow's milk, and the formulation of maternal nutrition and education programs as its first activities. It was incorporated on February 1907 as La Proteccion de la Infancia, Inc. The first Filipino-led Charity Corporation.

MESSAGE FROM THE PRESIDENT



AMARYLLIS T. TORRES

The year 2020 brought many unexpected challenges to Philippine society. Gota de Leche was not spared by these difficulties. It could no longer proceed with its health and nutrition services for women and children, its signature program for decades. To overcome the limitations imposed by the lockdown due to the pandemic, innovative ways were devised to be able to reach out to our beneficiaries, children and mothers from different barangays of the city of Manila.

BoT President

We are also proud to report that Gota de Leche, in its own limited ways, was able to provide meals for the frontliners serving COVID patients in various hospitals of Metro Manila during the first lockdown. Through the efforts of its Executive Director and staff, Gota de Leche became a focal point for the collection, sorting and delivery of relief goods for the victims of super typhoon Rolly in Bicol, Bulacan and Rizal. So many donors, so many goods – they filled up the halls of our heritage building. These experiences have taught us that pakikipagtulungan and pakikidamay are alive in the Filipino's psyche. In times of emergencies, each one pitches in to help those in need. The challenges continue in 2021. And Gota de Leche will remain steadfast in its role to reach out to women, children, families and communities, to promote their rights to health, safety, survival and development.

Amaryllis T. Torres

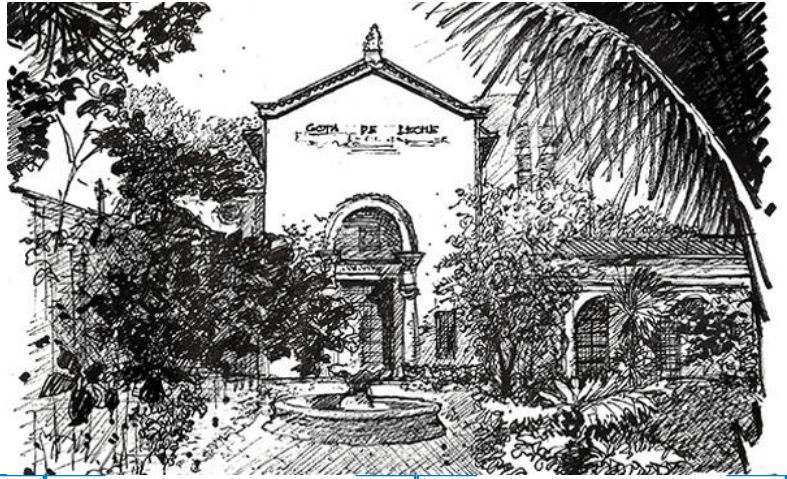
VISION

La Proteccion de la Infancia Inc. aims to be a dynamic and sustainable organization respected and recognized for its commitment to promote the health and well-being of children and mothers which is vital to the over-all well-being of society.

MISSION

La Proteccion de la Infancia Inc. exists to provide support for malnourished disadvantaged and indigent children with milk and other nutrients and to promote the health and well-being of children and mothers through information and services.

YEAR 2020 IN REVIEW



JAN

Department of Health (DOH) donated vitamins and protein supplements for children and mothers. DOH gave boxes of zinc sulfates for the children and the peanut butter protein supplements for the mothers.

FEB

Gota de Leche had their first Service Day for the year; invited are the Children with Disabilities (CWDs) and the Pregnant and Lactating Women (PLWs) for their monthly medical check-up and a mini gathering. They were given also essential packs as their monthly assistance.

MAR

Gota de Leche extended help to poor communities in Quezon City through the Managing Executive Ms. Anna Leah Sarabia and coordination to Barangay Offices, gave food supplies and vitamins to six (6) barangays for their indigent constituents.

APR

Gota de Leche has improved the garden turned into urban farm where more vegetables was planted and monitored and cared by the Admin and Program Support Staff guided by the Managing Executive Ms. Anna Leah Sarabia.

MAY

Managing Executive, Ms. Anna Leah Sarabia, continued to help by giving food donations to the homeless and the medical frontliners all throughout the ECQ. Through her, Gota de Leche was also able to give assistance to the families of the CWDs.

JUN

Due to lockdown measures, Gota de Leche has focused on repair and maintenance of the premises, sanitation and urban farming. Heritage Conservation was focused during the quarantine period.

JUL

Rise Against Hunger Philippines (RAH), Project KIDS and Ms. Mia Garcia was able to donate chocolates, pancakes, multivitamins, face masks and a month supply of Milk for Children with Disabilities beneficiaries. Staffs were able to go to work, packed and distributed a set of assistance.

AUG

Essential packs were delivered thru online couriers and make it to the home of the CWD Beneficiaries. Some were scheduled for meet-up pick-up through delivery by the Managing Executive, Ms. Anna Leah Sarabia.

SEP

Gota de Leche has organized the Mothers for assessment and has managed to contact them thru Facebook messenger, group chat was made to easily contact with the mothers and to have updates on them.

OCT

Gota de Leche has been able to give assistance to both the CWD and PLW beneficiaries as funds have been enough to cover both programs. Rise Against Hunger Philippines (RAH) and Ms. Raisa Trenas has donated goods that are helpful for the assistance for the beneficiaries.

NOV

There were two typhoon that hit the country and has affected many families. Gota de Leche received donations to help the affected families and thru Gota de Leche's partner communities in Bicol, Catanduanes, Rizal, Marikina, and Mindoro. Gota de Leche was also able to give away boxes of rice meal packs, hygiene kits, face masks, face shields, and tarpaulins to the victims.

DEC

When December rolled in, Rice Against Hunger-Philippines donated 1000 Noche Buena packs to be given away to 1000 families. These were given away to all the active 2019-2020 beneficiaries (Graduated Regular Malnourished, CWDs, and PLWs), the homeless, the typhoon victims, and the CWDs, PLWs, and Senior Citizens of Mendez, Cavite.

OUR PROGRAMS



PROGRAM 1: Milk-Sharing and Nutrition Support for Children with Disabilities



As the 115-year-old program to rescue poor children of pre-school age from hunger and malnutrition Gota de Leche became a byword in Philippine charity institutions. Through its provision of milk, food supplements and medical services. Gota de Leche's system of reversing the health status of large groups of indigent children from wasted to normal growth. Gota de Leche became the model upon which village Puericulture Centers of the 1920s and 1930s, and the later Barangay Health and Welfare Facilities of the 1970s and 1980s, were based. This fact has been acknowledged even today in textbooks outlining the history of social welfare in the country.

Each year, between 200 and 350 beneficiaries are enrolled for a period of 10 to 12 months in a program which includes monthly medical check-ups, food supplements, fresh vegetables and full cream milk for children in their 2nd 1,000 days, or between 3 and 6 years. Other services, such as Dental treatment and nutrition workshops, as well as various activities to stimulate mental development are organized in cooperation with other organizations and institutions. The impact of malnutrition on the cognitive and functional abilities of young children became a subject of interest among Gota de Leche workers in the mid 2000s, when service providers began monitoring a small group of children mental and developmental disabilities. Their observations were confirmed when studies beginning 2006 were published connecting early nutrient deficiency among infants and young children to brain development, most noticeable among families in extremely impoverished conditions. The Philippines is among the 5 countries in Asia with the highest number of stunted and wasted children. While cases of very low birth weight, stunting and malnutrition of mother during pregnancy were what inspired Gota de Leche to create Program 2 (see below), Gota's own experience and other studies have validated the need to focus on nutrition support for stunted and disabled children up to their second 1000 days. This is why Gota de Leche remains perhaps the only institution in the country that continues its quest to build up the health status and immune system of very young children with disabilities in the poorest economy level of our society.

OUR PROGRAMS



PROGRAM 2: Nutrition Support for Pregnant and Lactating Mothers



The right to adequate nutrition is a fundamental, foundational right for children. But because 1 out of 3 young Filipinos are stunted, initiates nutrition interventions for women in target communities every month. These are high-protein and vitamin-enhanced rice meal packs that will help strengthen mothers whose dietary intake may be inadequate. Monthly medical check-ups of both mother and child are conducted by medical practitioners, while food supplements and vitamins are distributed.

But as the Covid-19 pandemic continues to rage in the most crowded cities of the country, women living in quarantined areas have become more vulnerable to sexual assaults, violence and unplanned pregnancy, even at a very young age. Gota de Leche's efforts to re provide nutrition support and health services have been limited by travel restrictions, making digital communication and information sharing through cell phones and main means to reaching them and their families.



OUR PROGRAMS



PROGRAM 3: Relief and Outreach



This program responds to the needs of poor communities whose food supplies for children and PLW are affected by Climate Change and Natural Disasters, most specially those in geographically isolated and disadvantaged areas. Urgent relief and intermediate feeding projects are established in these areas together with volunteers and local NGO partners in the Cordillera Autonomous Region, in Central Luzon, in Western and Central Visayas.

OUR PROGRAMS



PROGRAM 4: Heritage Conservation

Gota de Leche Building is declared as an Important Cultural Property by the National Museum in early 2014, the organization has a duty to find ways to maintain and conserve the century-old building, as well as the archives, photographs and heritage properties in its care, as a legacy of the Filipino people. A project is ongoing to digitize, translate and promote the historical significance of the content of the Gota de Leche Archives.





ACCOMPLISHMENTS 2020

in the time of Pandemic



The year 2020 started with Gota de Leche receiving vitamin donations from the Department of Health (DOH) for both children and moms. DOH gave boxes of zinc sulfates for the children and the peanut butter protein supplements for the mothers. Some of these have been donated to children and mothers living in Mendez, Cavite and Tagaytay City, two of the areas affected by the Taal Volcano Eruption on January 12, 2021. Gota de Leche was able to send vitamins to the Rural Health Unit and the children living per barangay in Mendez, Cavite through their Project Associate, Ms. Chantal Balinbin, and Mendez Alliance Bantay Bayan (MABB) and the remaining vitamins were given to the current beneficiaries of Gota de Leche.



Gota de Leche had the first Service Day of the year on February 27, 2021. The Regular Malnourished beneficiaries have already graduated by December 2019, so Gota de Leche invited in the Children with Disabilities (CWDs) and the Pregnant and Lactating Women (PLWs) for their monthly medical check-up and a mini gathering. The beneficiaries have been served snacks donated by Starbucks Philippines while waiting for their turn for the check-up. Their monthly assistance has also been given to them during the medical check-up. A pack of assistance consists of milk, ricemeal packs (Mannapack), and their medicines. Dra Rebecca Imelda Maranan managed the medical check-up for both CWDs and PLWs.



As the lockdowns started a few weeks after the Service Day, Gota de Leche had to cease all operations temporarily. However, our Managing Executive, Anna Leah Sarabia, continued to help by giving food donations to the homeless and the medical frontliners all throughout the ECQ. Through her, Gota de Leche was also able to give assistance to the families of the CWDs. They have been provided food assistance in the form of milk and ricemeal packs, and vitamins for the children.



As the quarantine started to ease, the staff were allowed to go back to work by late July, having been declared as frontliners by the national government. The second round of assistance have been given to the CWD beneficiaries by late July to early August. Rise Against Hunger (RAH) was able to donate chocolates and pancakes for the children's snacks. Project KIDS was able to donate multivitamins and face masks for children. Also, Ms. Mia Garcia was able to donate a month's worth of milk per child. These donations, along with the Ayuda, have been sent to the families via delivery couriers because it wasn't safe yet for them to come pick it up at the Gota de Leche building.



By October, Gota de Leche has been able to give assistance to both the CWD and PLW beneficiaries as funds have been enough to cover both programs. RAH was able to send another batch of donations and consists of coffee for the mothers, hygiene kits, and crackers. Ms. Raisa Trenas was also able to send out 1000 pieces of face masks for adults. Gota de Leche was able to add a few packs of instant noodles, sardines, alcohol, monggo, brown rice, white rice, and seeds for planting for the PLWs' essential pack.



Gota de Leche has been preparing for the next round of assistance, however, devastation happened in the form of the Typhoons Quinta and Rolly. There were two (2) batches of assistance, GDL posted an urgent call for help on FB and was able to collect enough funds and helped 500 IPs in Mindoro, 600 families in Albay, 600 families in Marikina, and 300 families in Catanduanes. Ms. Sarabia added that families in Catanduanes need the most help as ports and roads are damaged and relief packages can only be shipped via air.

Donations for the typhoon victims have been pouring continuously and numerous volunteers dedicated their days and even weeks to packing and sorting donations. Boxes of old clothes, fresh undergarments, relief goods, hygiene kits, rice, vitamins, and other necessities were brought to Gota de Leche for repacking and to be sent to Gota de Leche's partner communities in Bicol, Catanduanes, Rizal, Marikina, and Mindoro. Gota de Leche was also able to give away boxes of ricemeal packs, hygiene kits, face masks, face shields, and tarpaulins to the victims.



When December rolled in, Rice Against Hunger-Philippines donated 1000 Noche Buena packs to be given away to 1000 families. These were given away to all the active 2019-2020 beneficiaries (Graduated Regular Malnourished, CWDs, and PLWs), the homeless, the typhoon victims, and the CWDs, PLWs, and Senior Citizens of Mendez, Cavite.

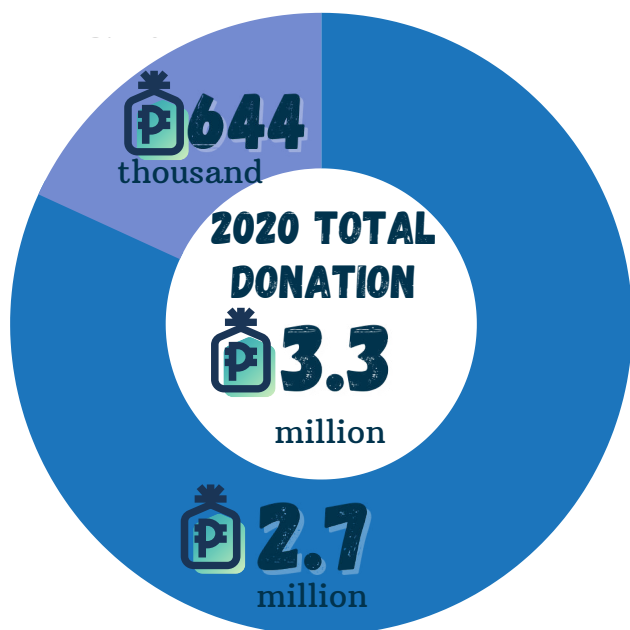
For Christmas, the beneficiaries received a lot of gifts. Project KIDS was also able to donate more than a hundred surprise gifts, spaghetti packs, and Christmas Hams, while Metrobank was able to donate 50 shoebox gifts that contained snacks and school supplies for the CWD beneficiaries. JDC Rainbow foundation donated about a hundred snack Ayuda pack and Dell Technologies Inc., Philippines was also able to donate sacks of rice, Noche Buena packs for both the CWD and PLW beneficiaries. Along with these donations, Gota de Leche gave their monthly assistance of milk and medicine assistance to the CWDs.



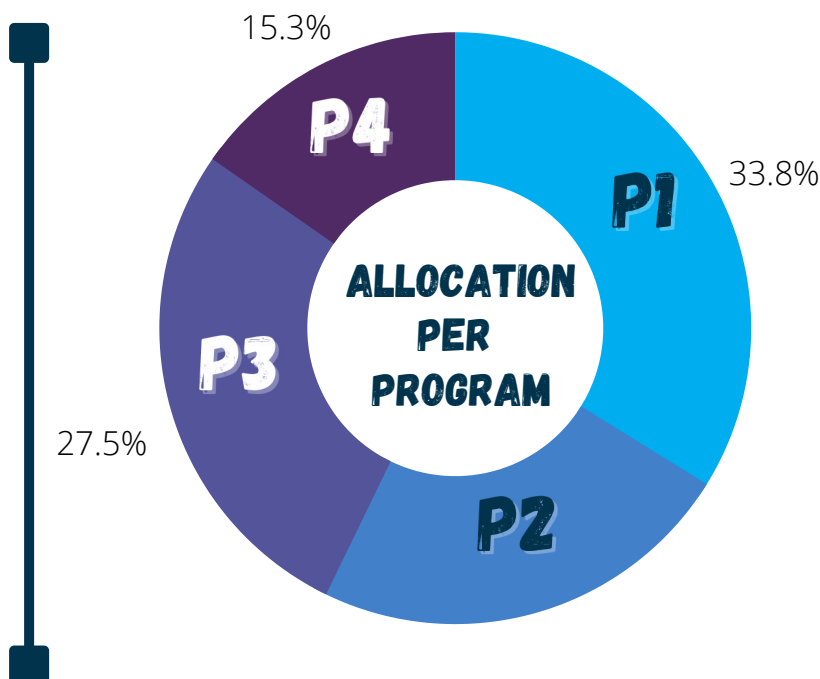
TOTAL IN-KIND AND CASH DONATIONS

The global economy has been affected by the COVID-19 pandemic and has also affected the operations of Gota de Leche as well. Amidst of crisis, the organization has received support from great people and reached out to help the program beneficiaries in the time of difficulties with the lockdown measures and unemployment and also with the families directly affected by two (2) strong typhoons that hit the country this year.

Gota de Leche received a total of 3.3 million donations; in which 2.7 million was in cash and 644 thousand was in-kind.



■ Cash ■ In-Kind



■ Milk-Sharing and Nutrition Support for Children with Disabilities
 ■ Nutritional Support for Pregnant and Lactating Women
 ■ Disaster Relief and Outreach
 ■ Heritage Conservation

OUR SPONSORS AND DONORS



Regina Zamora Cowell
 Mia Garcia
 Sinag De Leon Amado
 Xiklab, Inc.
 Florence Tadiar
 Limtree, Inc.
 Peter Bruce Lourence
 Happi Farm
 Rea Arcenal
 Badette Gancayca
 Sibyl Jade Pena
 Hairshaft Salon
 Metro Asia Estates, Inc.
 Lagawe Ladies
 Mastercard Employees
 Chinabank Officers

Vis-A-Vis Management Consultancy
 Ma. Cecilia Capalad
 Tats Monahan
 Lorraine Tan
 Myrna Dimayuga Alberto
 Nina Mikaela Sarmiento
 Mark Anthony Que
 Janine Francesca Montano
 Ma. Bella Siasoco
 Ching Angeles
 Elvira Matu
 Anne Charmaine Ondo Magat
 Angeline Pacada
 Micah Shannen Siy
 Julieta Virginia Lluch
 Joy Buensalido
 Kibuya Agro Development Corp.
 Glitteratty Marketing
 Mr. & Ms. Andres Ibarra
 Saringan Family
 Jamiliah Bashier Watamama
 Elsa Santos
 Carole Tysmans
 Marites Caballero
 Kristoffer Anthony Patron
 Mae De Leon
 Corazon Nolasco
 Alma Miclat
 Jose Ma Rafael Silerio
 Abby Agustin Sicam
 Babeth Lolarga
 Ariel Guarte

MESSAGE FROM THE MANAGING EXECUTIVE



ANNA LEAH SARABIA

It is in giving that we receive. And because we have received much from our patrons, we can only show our gratitude to them by continuing our work: to provide nutrition support and relief aid to Gota de Leche's beneficiary children and mothers, to our medical heroes at the front lines of the pandemic wars, and to families who suffered from the super typhoons of last year's last quarter.

2020 was an exceptional year for those who could raise themselves to overcome the fear and grief that hovered the world for months and months, lingering even beyond the next 12 months. But the generosity of people outlasted the feeling of despondence. This period of tribulation was in fact the best time to prove that even the youngest and the quietest had actually a lot to contribute. More than the time, talent, food, material resources and cash that families, organizations and individuals brought to our offices, they awakened an amazement at our capacity to respond to anguish with kindness.

Gota de Leche gives a special shout out to those who made the will to do good a shield against hopelessness: Silver Finance and the Zamora Clan, Rise Against Hunger, International Christian Ministries, Vitamin Angels, the members and friends of Maryknoll College High School Class of 71, the triathletes and coaches behind Padyak para sa Bicol, Project KIDS, JDC Rainbow, Mia Garcia and Friends, Dell Computers Philippines, and the dozens of donors and volunteers who have made giving back to fellow humans a habit of paying it forward.

Thank you for not allowing despair to dominate our world. Thank you for making our work and our mission possible. Thank you for helping us to help others even in the most difficult of times.

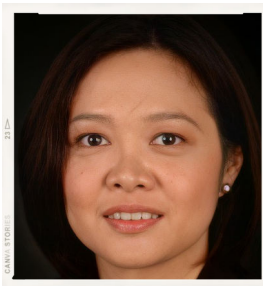
BOARD OF TRUSTEES



Amaryllis T. Torres
President



Rebecca N. Tañada
Vice-President



Virginia B. Viray
Secretary



Joaquin E. Quintos IV
Treasurer

Members:



Jose Paulo E. Campos



Paolo Salvador Grijalvo



Juliana M. Luz

Ex-Officio:



Anna Leah Sarabia
Managing Executive



Mika Sarmiento
Representative Secretariat
for General Assembly



PJS Law
Legal Counsel



R.T. Belarmino & Co., CPAs
External Auditors

EDITORIAL BOARD

SUPERVISING EDITOR:

ANNA LEAH SARABIA

LAYOUT DESIGN:

GINESTY C. GILBOY, RSW

CONTENT CONTRIBUTORS:

**ANNA LEAH SARABIA
CHANTAL BALINBIN
GINESTY C. GILBOY
MARY GRACE GUMATA
BERNADETTE PILARES**

PHOTO CREDITS:

GDL STAFF

PROOFREADER:

ANNA LEAH SARABIA



GOTA DE LECHE

SHARING THE MILK OF HUMAN KINDNESS
SINCE 1906